

Miele

Fully Integrated
18" Freezer with Internal Ice Maker

F 1413 Vi



Fully Integrated 18" Freezer with Internal Ice Maker F 1413 Vi



F 1413 Vi

Features:

- MasterCool controls
- ClearView lighting system
- Drop and Lock Shelves
- SmartFresh storage drawers
- FullView storage drawers
- Ice maker
- RemoteVision capable
- Acoustic door and temperature alarm
- Optical door and temperature alarm
- Energy Star

SPECIFICATIONS

F 1413 Vi – Item 37141301USA - Left Hinged

| | |
|--------------------------------------|---|
| Overall Unit Width | 17 ³ / ₄ " (451 mm) |
| Overall Unit Height | 84" (2134 mm) |
| Overall Unit Depth | 24" (610 mm) |
| Niche | |
| Minimum Cabinet Opening Width | 18" (457 mm) |
| Minimum Cabinet Opening Height | 84" (2134 mm) |
| Minimum Cabinet Opening Depth | 25" (635 mm)* |
| Interior Volume | |
| Freezer Volume | 8.39 cu-ft (237.6 L) |
| Plumbing | |
| Water Supply Requirements | Connect to a cold water supply only. Do not connect to a low-mineral or a reverse osmosis system. Must be connected to a shut-off valve. The water shut-off valve must be accessible after installation. The water pressure must be between 25 psi (1.7 bar) and may not exceed 80 psi (5.5 bar). If the pressure is higher than 80 psi (5.5 bar), a pressure reducing valve must be installed. |
| Water Connection Line | Standard 1/4" O.D flexible water line. The maximum outer diameter of the water pipe (without fittings): 3/8" (10 mm). Water line is not included. |
| Electrical | |
| Electrical Requirements - Volts/Amps | 110V / 120V, 60Hz, 15 Amps In the case of side-by-side installations, a separate outlet must be used for each appliance. |
| Power Cord - Plug and length | NEMA 5-15 plug, 5 ft (1.52 m) |
| Custom Panel | Please refer to the manual for further details. |
| Maximum Panel Weight | 123 lbs (56 kg) |
| Maximum Panel Thickness | 1 ¹ / ₂ " (38 mm) |
| Minimum Panel Thickness | 3/4" (19 mm) |
| Shipping | |
| Shipping Weight | 354 lbs (160.5 kg) |
| Shipping Dimensions | 21 ¹ / ₄ " W x 89 ³ / ₁₆ " H x 29 ¹ / ₄ " D |
| Support | |
| Call Miele | (800) 999-1360 |
| Miele Website | www.mieleusa.com |
| 20/20 Link | 2020technologies.com |

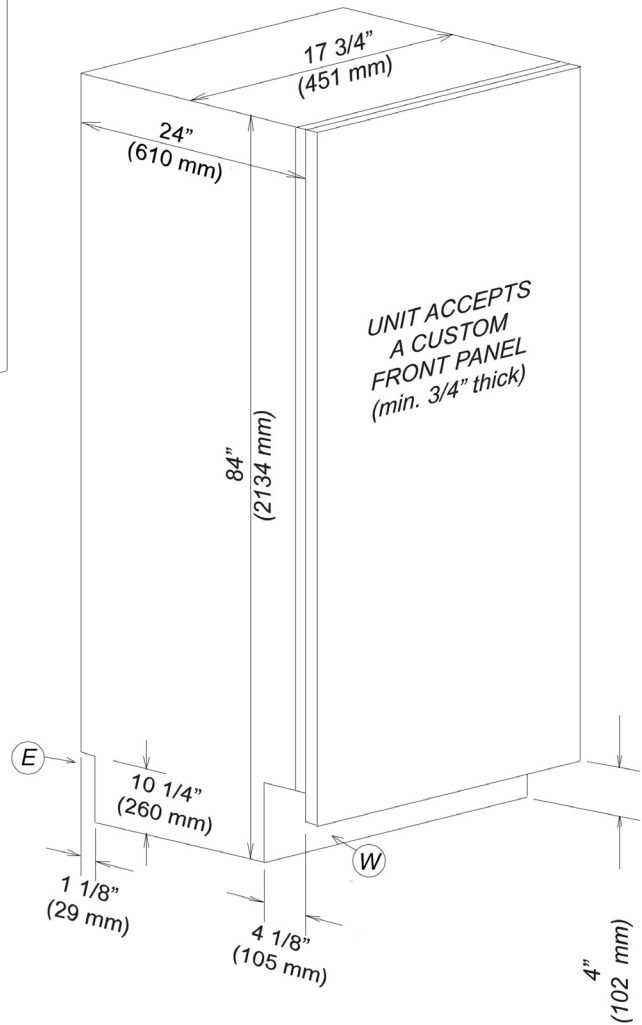
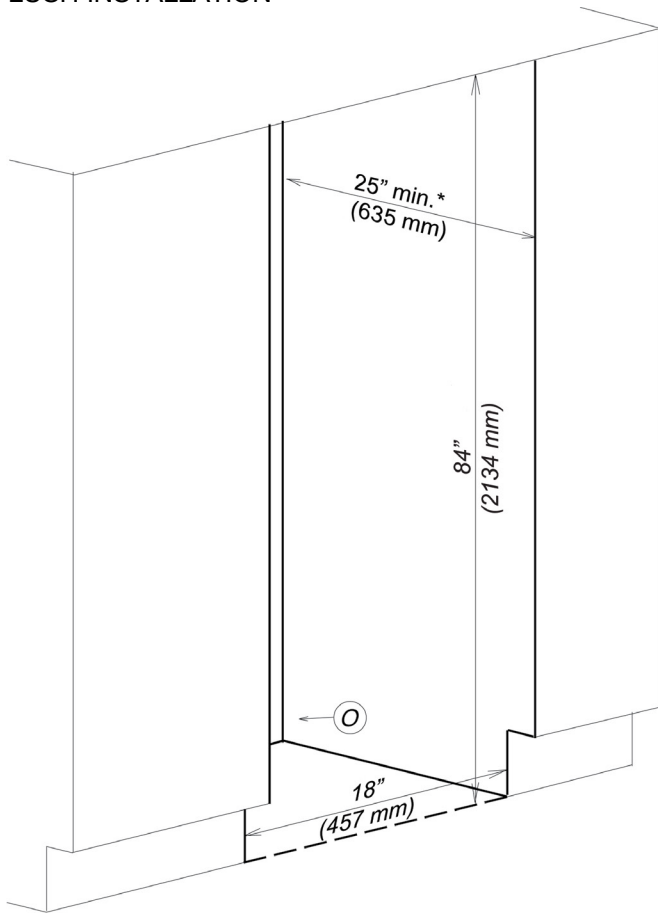
Please note the following:

- This specification sheet is for a single built-in unit.
- When combining multiple MasterCool units side-by-side, please refer to the Merging Kit specification sheet.

*If design calls for a partition less than 6 ⁵/₁₆" (160 mm) the left unit's cutout will require an additional ¹/₈" (3 mm) to the width to allow installation of the Heating Mat/Merge Kit.

Fully Integrated 18" Freezer with Internal Ice Maker F 1413 Vi

FOR FLUSH INSTALLATION



* Niche depth assumes a 3/4" (19 mm) panel, please adjust according to custom panel thickness

Location Codes

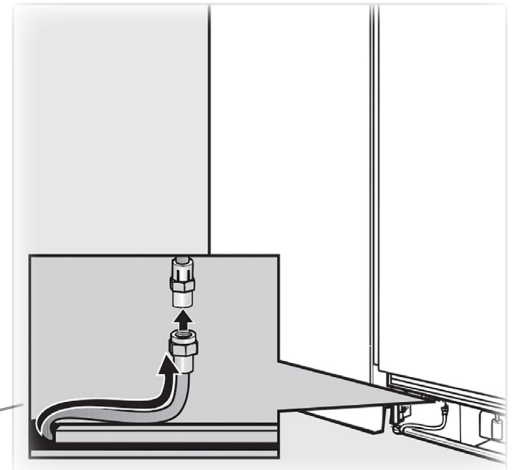
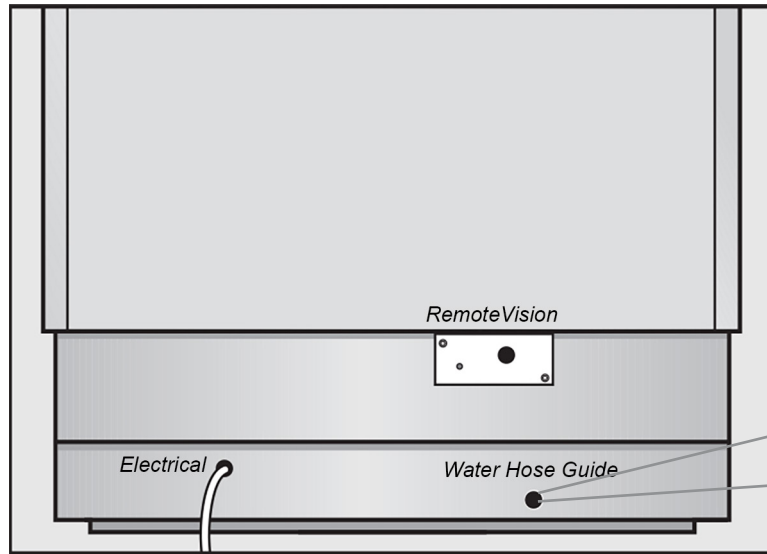
- E - 5 foot - Nema 5-15 molded plug power cord - connects lower left rear
- O - Standard NEMA 5-15 Outlet - locate less than 9" above finished floor
- W - 1/4" flexible water line - not included

Notes

- All Installations must be done in accordance with local codes
- Sides of adjoining cabinets should be filled (flush to frame) to insure proper fit and finish
- For side-by-side installation please refer to the Miele merging kit specification sheet - Some merge kits will require the location of the Electrical outlet(s) to be in adjacent cabinetry
- If design calls for a partition less than 6 5/16" (160 mm) the left unit's cutout will require an additional 1/8" (3 mm) to the width to allow installation of the Heating Mat.

Fully Integrated 18" Freezer with Internal Ice Maker F 1413 Vi

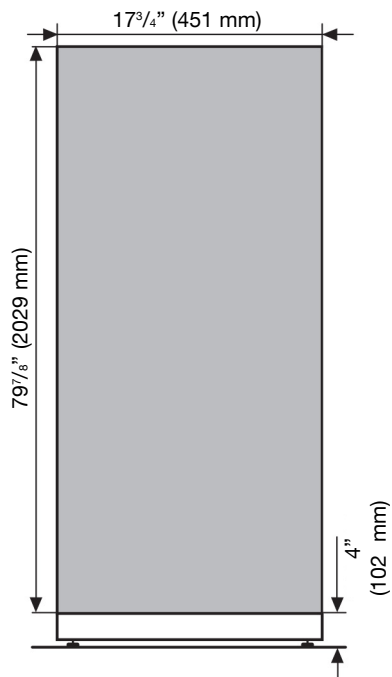
POWER SUPPLY AND WATER CONNECTION BACK VIEW



Water connection is located in front of unit.
1/4" compression fitting is needed.

Electrical - 5 foot (1.52 m) - 120 Volt - 15 Amp - NEMA 5-15 molded plug
Water line - 1/4" flexible water line - not included

DOOR PANEL DIMENSIONS KFP 1803 (Available as an accessory)

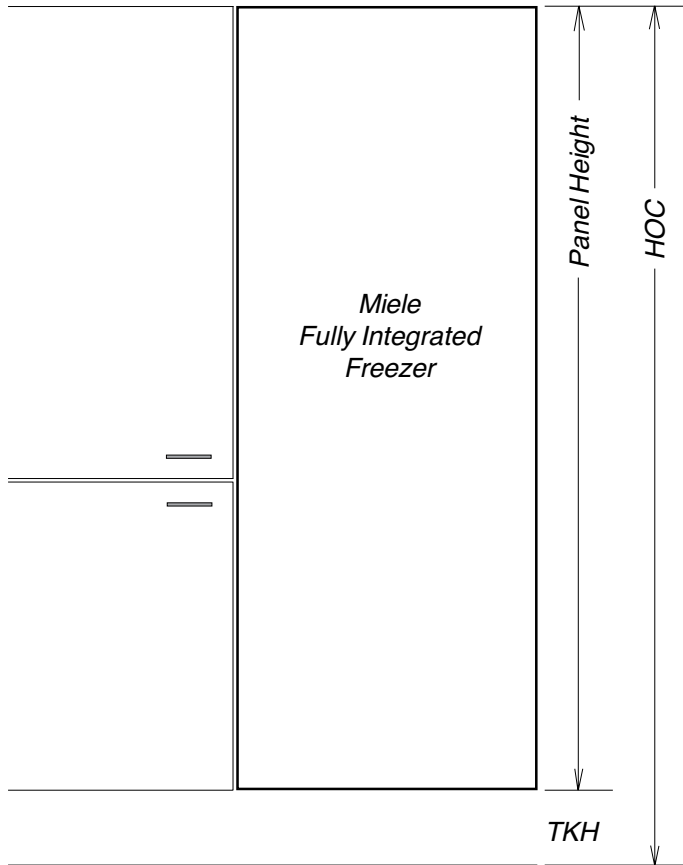


Fully Integrated 18" Freezer with Internal Ice Maker F 1413 Vi

CUSTOM INSTALLATIONS

These units do not come equipped with a front panel. They are designed to accept a custom door panel supplied by the cabinet maker. Miele has a unique panel integration system which allows the panels to align with the surrounding cabinets.

Panel size is determined in the following manner:



Width: 17 3/4" (451 mm) in all cases

Thickness: Minimum 3/4" (19 mm) outside frame

Height: Determined using the following calculation:

$$\text{Panel Height} = \text{HOC} - \text{TKH}$$

HOC = Total height of cabinet or side panel

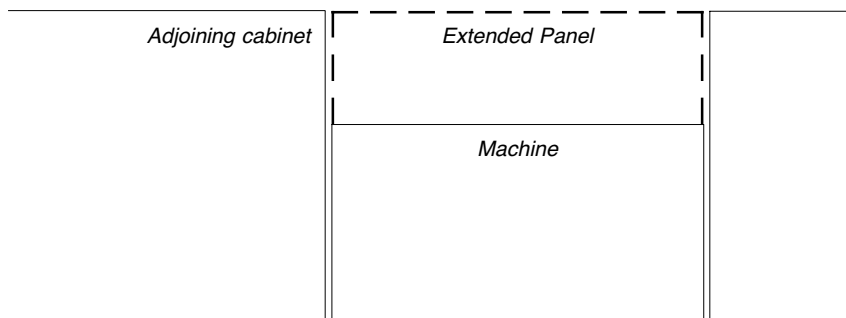
TKH = Toe-kick height

Note: Finish back side of panels to insure appearance
Panel may extend above unit. This is **not** considered in height calculation

Maximum panel weight: 123 Pounds

Panel Notes

If the adjoining cabinets are taller than the height of machine (HOM) - the front panel may be extended accordingly. Simply maintain the toekick height and extend the panel the needed distance.

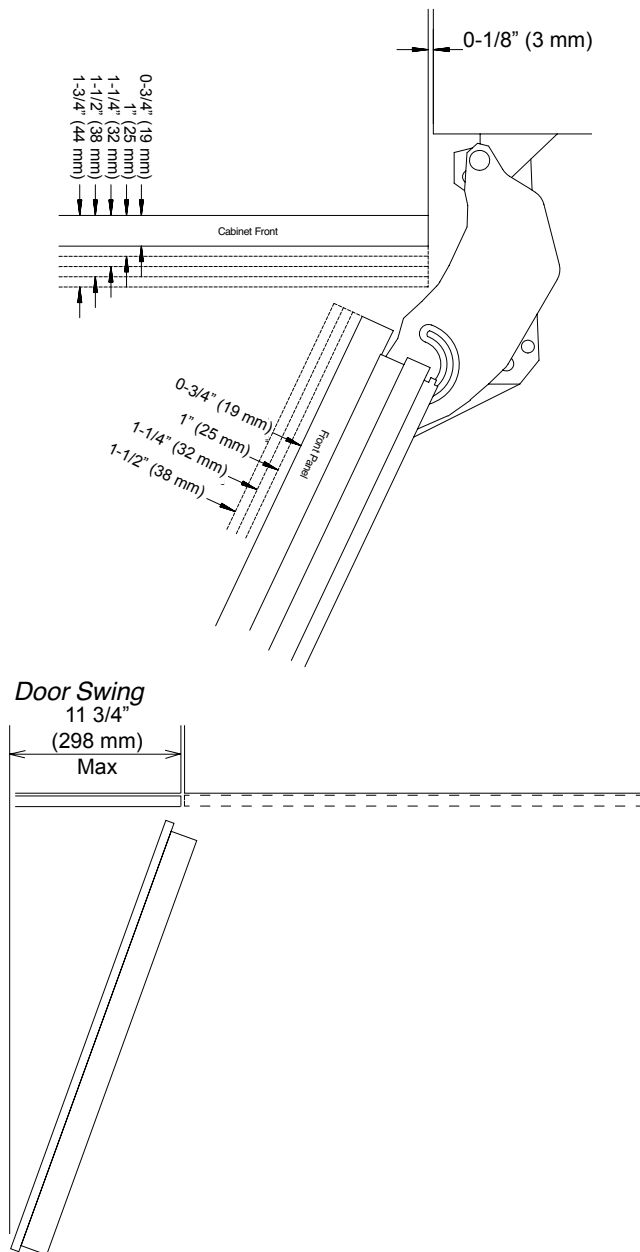


Fully Integrated 18" Freezer with Internal Ice Maker F 1413 Vi

HINGING DETAILS

115° Door

Thickness options



NOTE: Additional space needed depending on the thickness of front panels and handle used.
Freezer units cannot be stop pinned at 90°

Fully Integrated 18" Freezer with Internal Ice Maker F 1413 Vi

HINGING DETAILS 115° OPENING

