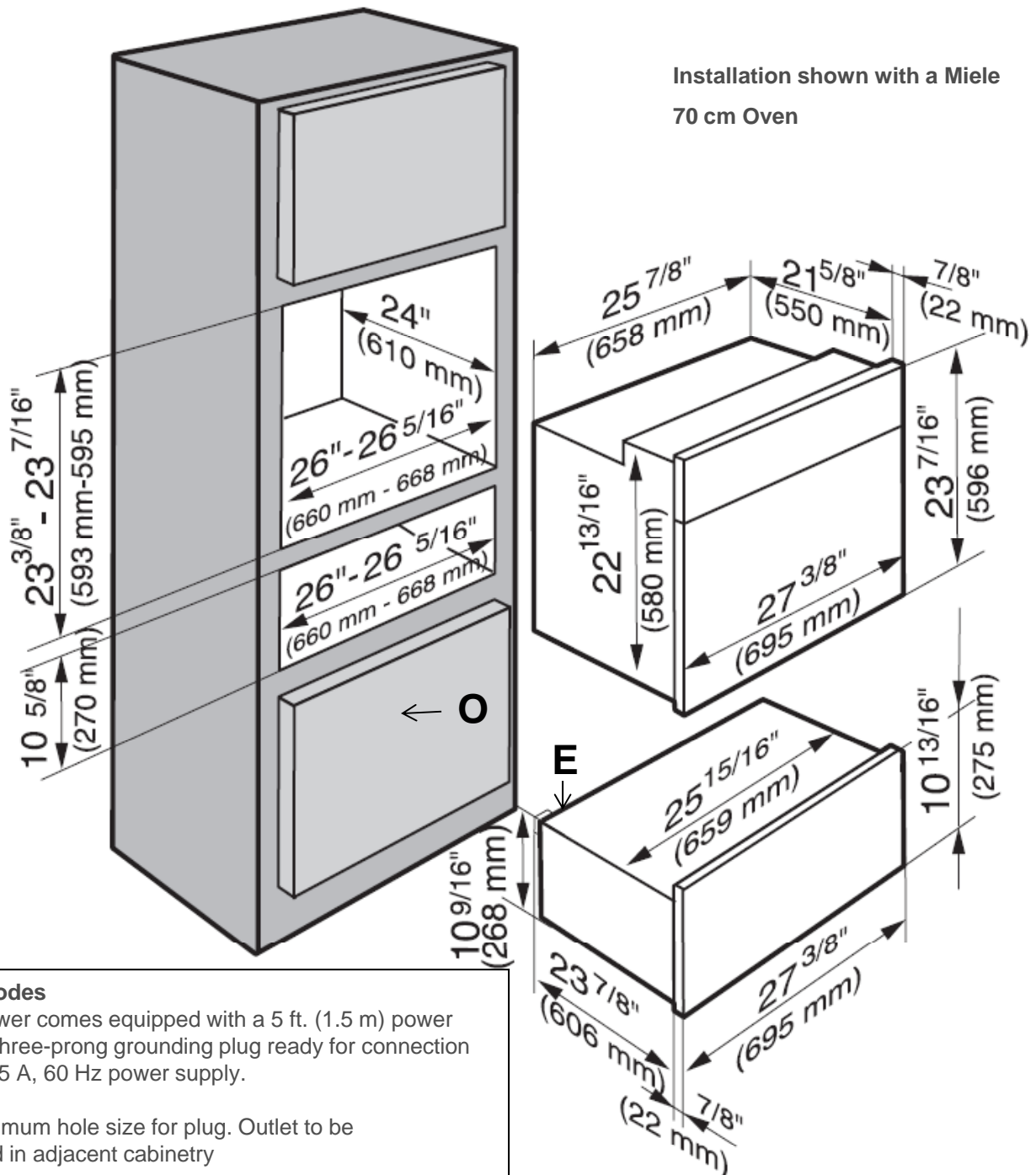


## Product and Cut-out Dimensions

Page 1 of 3

### Warming Drawer

ESW 4724 Classic Design U shaped with a DS 4045 Signature Series Handle



#### Location Codes

E – The drawer comes equipped with a 5 ft. (1.5 m) power cord with a three-prong grounding plug ready for connection to a 120V, 15 A, 60 Hz power supply.

O – 1" <sup>2</sup> minimum hole size for plug. Outlet to be installed in adjacent cabinetry

#### Notes

Miele appliances can be installed flush or proud. Discuss your installation requirements with your architect, designer and installer.

All installations must be done in accordance with local codes.

Note: Drawing is not to scale

Specification Sheets OJS 11142011

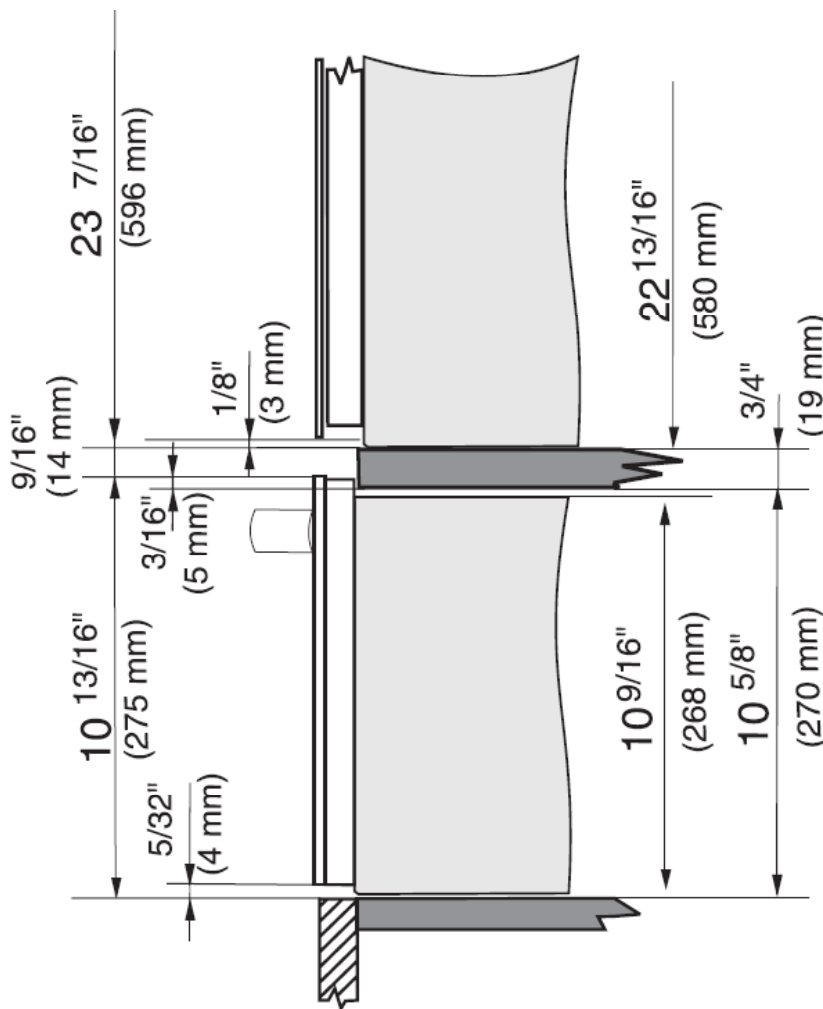
## Product and Cut-out Dimensions

Page 2 of 3

### Warming Drawer

ESW 4724 Classic Design U shaped with a DS 4045 Signature Series Handle

### Side view with a Miele oven



#### Location Codes

E – The drawer comes equipped with a 5 ft. (1.5 m) power cord with a three-prong grounding plug ready for connection to a 120V, 15 A, 60 Hz power supply.

O – 1" <sup>2</sup> minimum hole size for plug. Outlet to be installed in adjacent cabinetry

#### Notes

Miele appliances can be installed flush or proud. Discuss your installation requirements with your architect, designer and installer.

All installations must be done in accordance with local codes.

**Note: Drawing is not to scale**

**Specification Sheets OJS 11142011**

## Product and Cut-out Dimensions

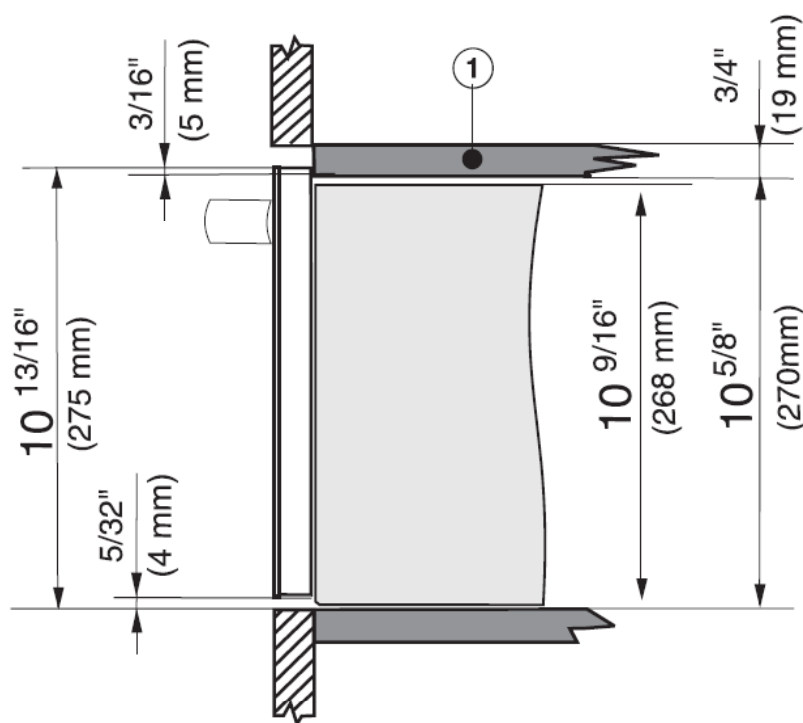
Page 3 of 3

### Warming Drawer

ESW 4724 Classic Design U shaped with a DS 4045 Signature Series Handle

### Side view

① A base is required for solo installations



#### Location Codes

E – The drawer comes equipped with a 5 ft. (1.5 m) power cord with a three-prong grounding plug ready for connection to a 120V, 15 A, 60 Hz power supply.

O – 1" <sup>2</sup> minimum hole size for plug. Outlet to be installed in adjacent cabinetry

#### Notes

Miele appliances can be installed flush or proud. Discuss your installation requirements with your architect, designer and installer.

All installations must be done in accordance with local codes.

**Note: Drawing is not to scale**

**Specification Sheets OJS 11142011**