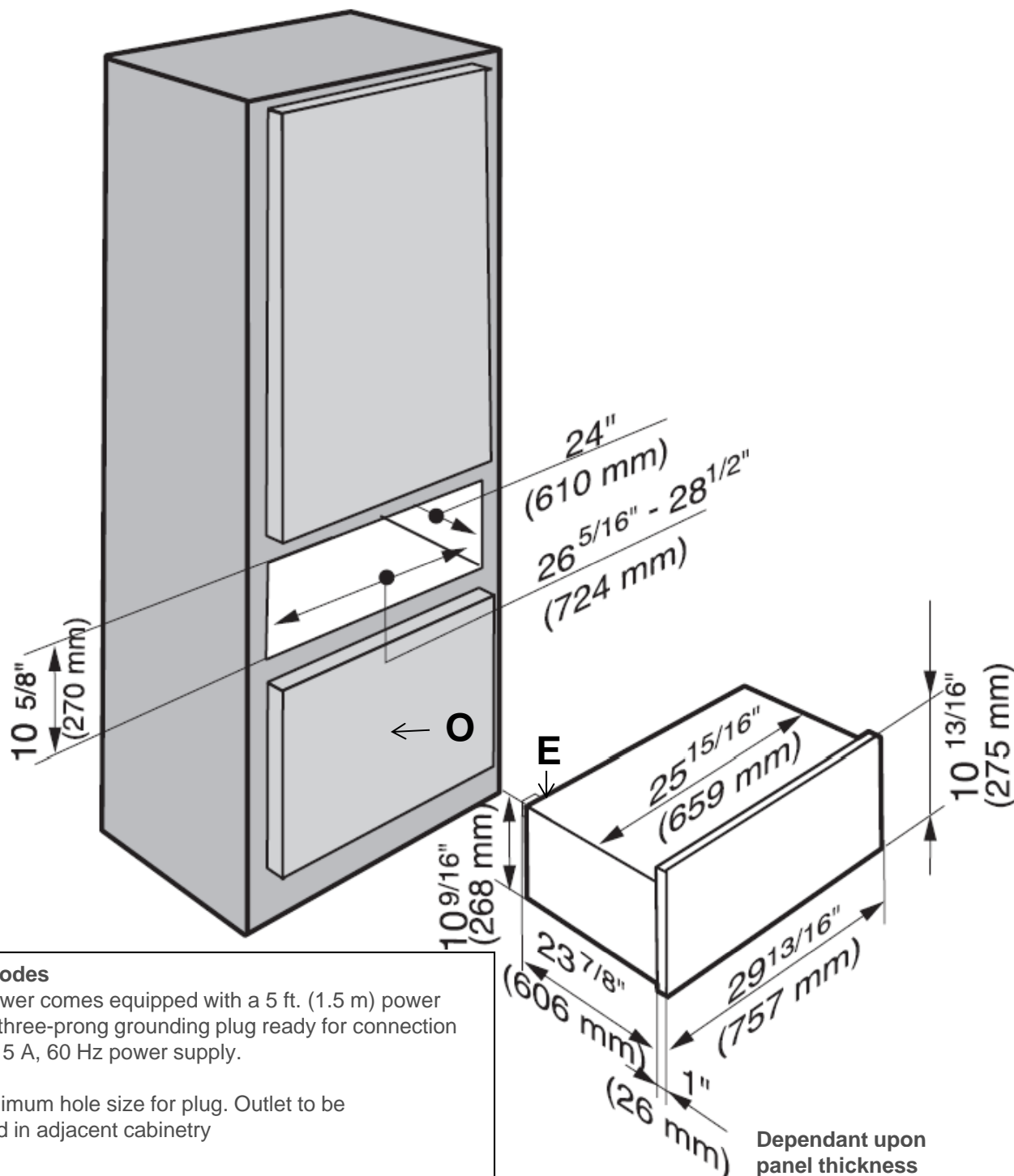


Product and Cut-out Dimensions

Warming Drawer

ESW 4802 FB Custom Panel and Handle

Page 1 of 4



Location Codes

E – The drawer comes equipped with a 5 ft. (1.5 m) power cord with a three-prong grounding plug ready for connection to a 120V, 15 A, 60 Hz power supply.

O – 1" ² minimum hole size for plug. Outlet to be installed in adjacent cabinetry

Notes

Panel must consist of heat resistant material 140 ° F (60° C). Miele appliances can be installed flush or proud. Discuss your installation requirements with your architect, designer and installer.

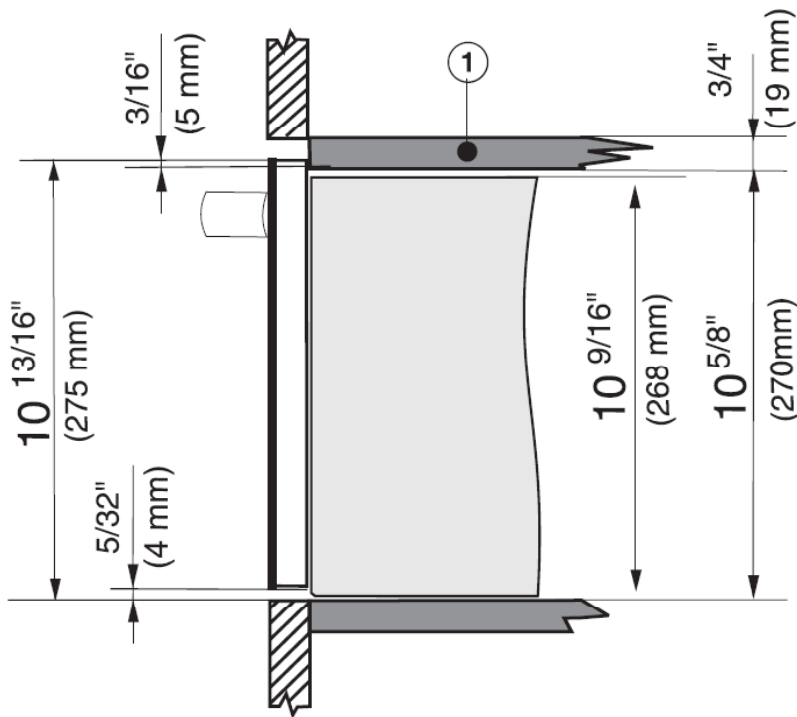
All installations must be done in accordance with local codes.

Note: Drawing is not to scale

Specification Sheets OJS 11142011

Product and Cut-out Dimensions
Warming Drawer
ESW 4802 FB Custom Panel and Handle

Page 2 of 4



Side view

- ① A base is required for solo installations

This unit is designed to accept a custom door panel supplied by the cabinet maker.
Panel size as follows:

Width: 29 13/16" (757 mm)

Height: 10 5/8" (270 mm)

Thickness: Minimum of 3/8" (10 mm)

Maximum panel weight: 11 Pounds (5 kg)

Location Codes

E – The drawer comes equipped with a 5 ft. (1.5 m) power cord with a three-prong grounding plug ready for connection to a 120V, 15 A, 60 Hz power supply.

O – 1" ² minimum hole size for plug. Outlet to be installed in adjacent cabinetry

Notes

Panel must consist of heat resistant material 140 ° F (60° C).
Miele appliances can be installed flush or proud. Discuss your installation requirements with your architect, designer and installer.

All installations must be done in accordance with local codes.

Note: Drawing is not to scale

Specification Sheets OJS 11142011

E – The drawer comes equipped with a 5 ft. (1.5 m) power cord with a three-prong grounding plug ready for connection to a 120V, 15 A, 60 Hz power supply.

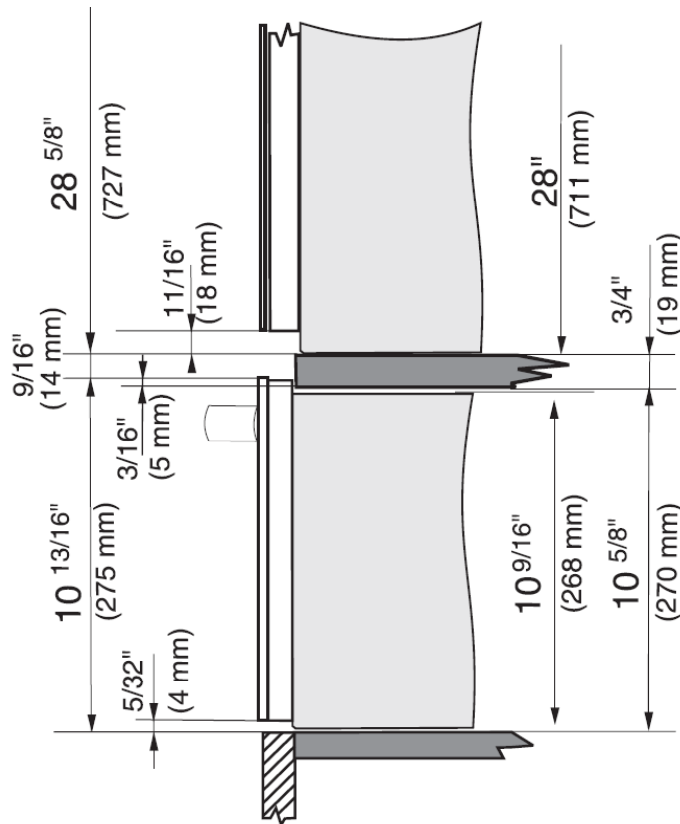
Panel must consist of heat resistant material 140 ° F (60° C).
Miele appliances can be installed flush or proud. Discuss
your installation requirements with your architect, designer
and installer.
All installations must be done in accordance with local codes.

Specification Sheets OJS 11142011

Product and Cut-out Dimensions
Warming Drawer
ESW 4802 FB Custom Panel and Handle

Page 4 of 4

Side view with a Miele oven



This unit is designed to accept a custom door panel supplied by the cabinet maker.
Panel size as follows:

Width: 29 13/16" (757 mm)

Height: 10 5/8" (270 mm)

Thickness: Minimum of 3/8" (10 mm)

Maximum panel weight: 11 Pounds (5 kg)

Location Codes

E – The drawer comes equipped with a 5 ft. (1.5 m) power cord with a three-prong grounding plug ready for connection to a 120V, 15 A, 60 Hz power supply.

O – 1" ² minimum hole size for plug. Outlet to be installed in adjacent cabinetry

Notes

Panel must consist of heat resistant material 140 ° F (60° C).
Miele appliances can be installed flush or proud. Discuss your installation requirements with your architect, designer and installer.

All installations must be done in accordance with local codes.

Note: Drawing is not to scale

Specification Sheets OJS 11142011