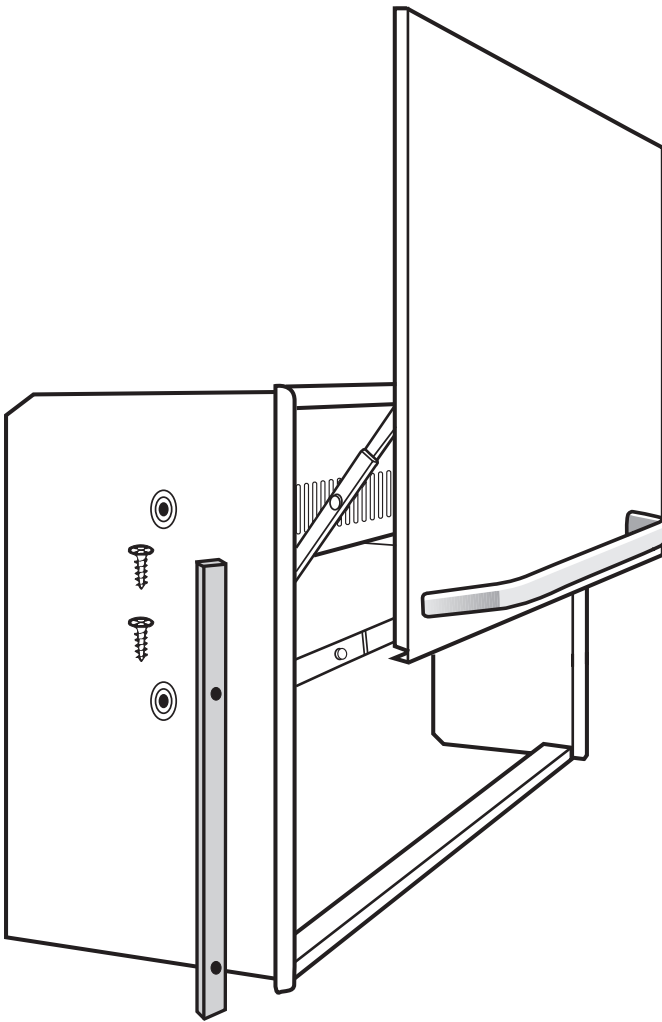


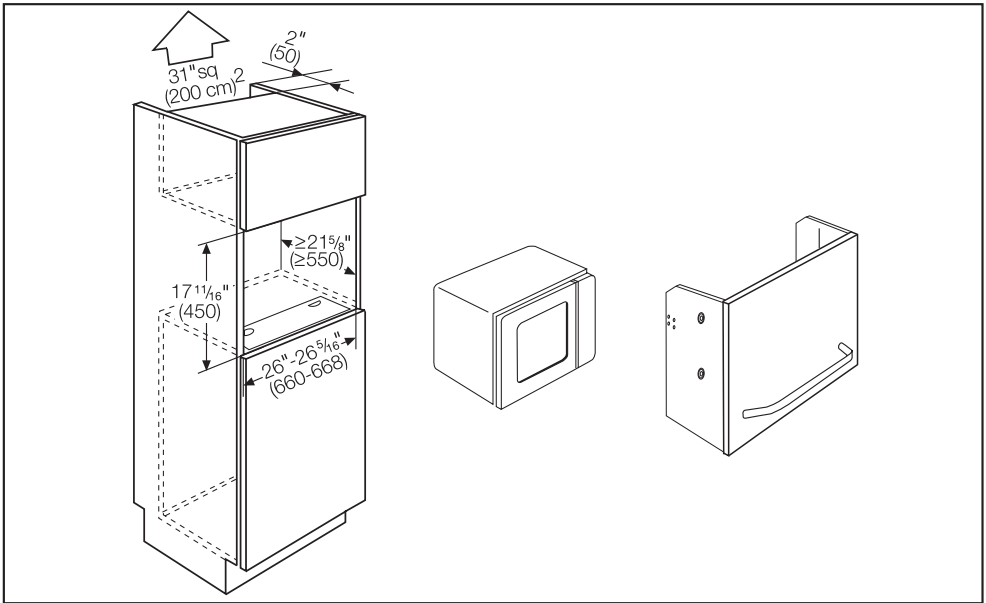
Installation instructions
Instructions d'installation
MLT 75

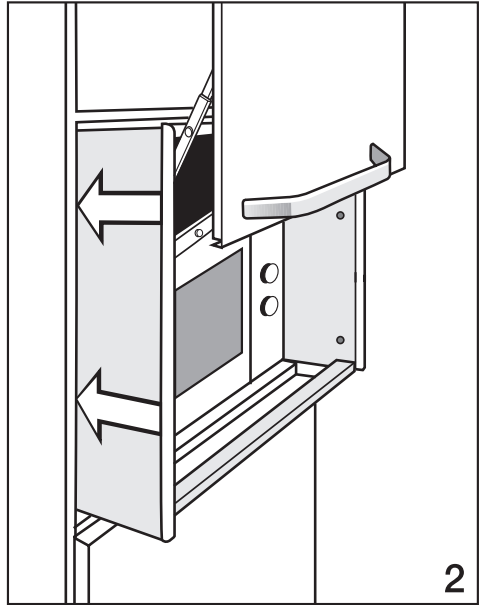
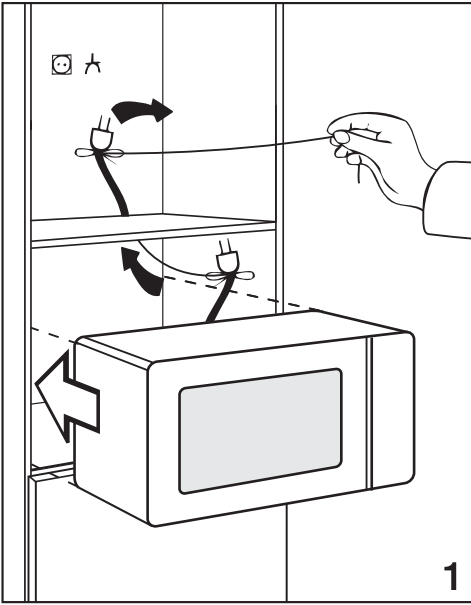


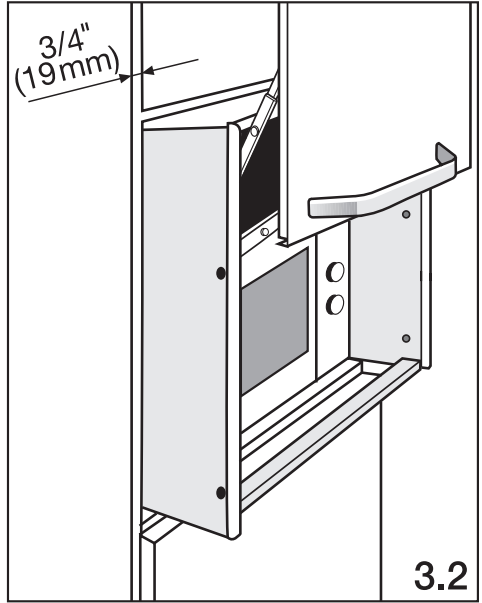
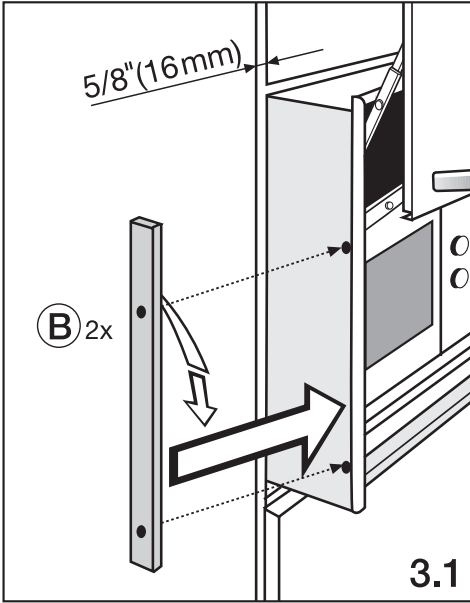
A 3.5 x 20 mm,
4x

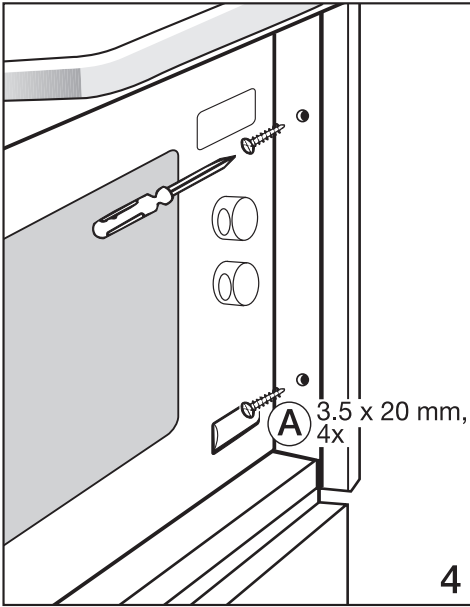


B 2x









Cleaning and Care / Nettoyage et entretien

Stainless steel

Stainless steel surfaces can be cleaned using a non-abrasive stainless steel cleaner.

To help prevent resoiling, a conditioner for stainless steel can also be used. Apply sparingly with even pressure.

Acier inoxydable

Les surfaces en acier inoxydable peuvent être nettoyées à l'aide d'un nettoyeur pour l'acier inoxydable non abrasif.

Pour empêcher de resalir, vous pouvez aussi utiliser un revitalisant pour acier inoxydable.

Appliquer modérément en pressant uniformément.



Miele, Inc. (USA)

National Headquarters

9 Independence Way
Princeton, NJ 08540

Phone: 800-843-7231
609-419-9898

Fax: 609-419-4298

www.mieleusa.com

Technical Service & Support

Nationwide

Phone: 800-999-1360

Fax: 888-586-8056

Mid-West Region

Phone: 800-666-6740

Fax: 847-714-9434

South-East Region

Phone: 561-995-8030

Fax: 561-995-8083

West-Coast Region

Phone: 800-245-8215

Fax: 415-241-6822

Miele Limited (CDN)

National Headquarters

55G East Beaver Creek Road
Richmond Hill, ON L4B 1E5

Phone: 800-643-5381
905-707-1171

Fax: 905-707-0177

www.miele.ca

info@miele.ca (general enquiries)

professional@miele.ca (commercial enquiries)

Mielecare National Service

Phone: 800-565-6435

905-850-7456

Fax: 905-850-6651

service@miele.ca (Tech. Service)