

**Miele**



## Fully Integrated 36" MasterCool

All Refrigerator:

K 2901 Vi / K 2911 Vi

All Freezer:

F 2901 Vi / F 2911 Vi

Bottom Mount:

KF 2901 Vi / KF 2911 Vi

French Door:

KF 2981 Vi

Shown: KF 2981 Vi

Info subject to change

[mieleusa.com](http://mieleusa.com)

Miele Help Desk (P): (800) 999-1360



## Fully Integrated 36" MasterCool

SPECIFICATIONS			
Overall Unit Dimensions	35 <sup>3</sup> / <sub>4</sub> " (908 mm) W x 83 <sup>3</sup> / <sub>4</sub> "- 85 <sup>3</sup> / <sub>16</sub> " (2127 - 2164 mm) H x 24" (610 mm) D [Depth does not include door panel]		
<b>Niche</b>			
Minimum Cabinet Niche Opening	36" (915 mm) W* x 84" - 85 <sup>3</sup> / <sub>16</sub> " (2134 - 2164 mm) H x 24 <sup>3</sup> / <sub>4</sub> " (629 mm) D		
Electrical	K 29x1 Vi	F 29x1 Vi	KF 29x1 Vi
Electrical Requirements	110V / 120V, 60Hz, 15 Amps In the case of side-by-side installations, a separate outlet must be used for each appliance.		
Power Cord	NEMA 5-15 plug, 5 ft (1.52 m)		
Plumbing	K 29x1 Vi	F 29x1 Vi	KF 29x1 Vi
Water Supply Requirements	-	Connect to a cold water supply only. Do not connect to a low-mineral or a reverse osmosis system. Must be connected to a shut-off valve. The water shut-off valve must be accessible after installation. The water pressure must be between 29 psi (2 bar) and 116 psi (8 bar). If the pressure is higher than 120 psi (8.3 bar), a pressure reducing valve must be installed.	
Water Connection Line	-	Standard 1/4" O.D flexible water line. Water line is not included.	
Shipping	K 29x1 Vi	F 29x1 Vi	KF 29x1 Vi
Shipping Weight	435 lbs (197 kg)	462 lbs (210 kg)	507 lbs (230 kg)
Shipping Dimensions	40" (1016 mm) W x 89 <sup>13</sup> / <sub>16</sub> " (1,294 mm) H x 29 <sup>1</sup> / <sub>4</sub> " (800 mm) D		

Please note the following:

- This specification sheet is for a single built-in unit.
- When combining multiple MasterCool units side-by-side, please refer to the Merging Kit specification sheet.

\*If design calls for a partition less than 6 <sup>5</sup>/<sub>16</sub>" (160 mm) the left unit's cutout will require an additional <sup>1</sup>/<sub>8</sub>" (3 mm) to the width to allow installation of the Heating Mat/Merge Kit.



K 2901 Vi (Right Hinged)  
Material# 10744550

K 2911 Vi (Left Hinged)  
Material# 10744600



F 2901 Vi (Right Hinged)  
Material# 10744940

F 2911 Vi (Left Hinged)  
Material# 10745030



KF 2901 Vi (Right Hinged)  
Material# 10745810

KF 2911 Vi (Left Hinged)  
Material# 10745830

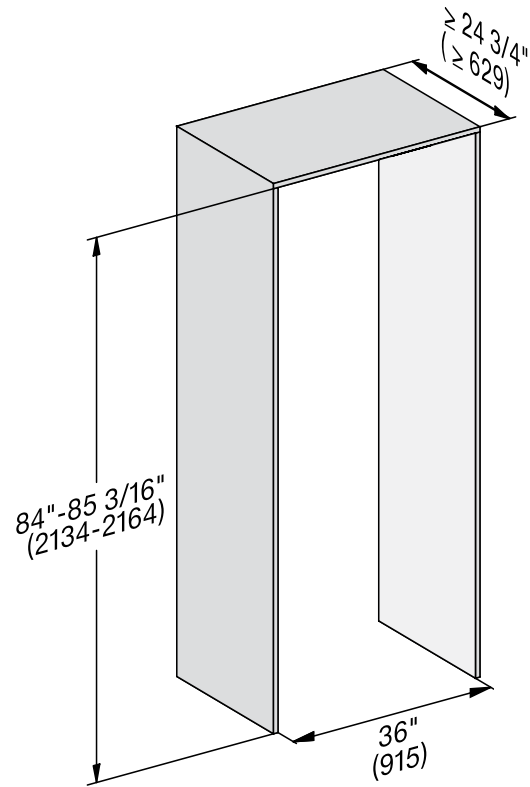


KF 2981 Vi (French Door)  
Material# 10745930

## Fully Integrated 36" MasterCool

### CUTOUT DIMENSIONS

- Niche depth assumes a 3/4" (19 mm) panel, please adjust according to custom panel thickness



### CUTOUT DETAILS

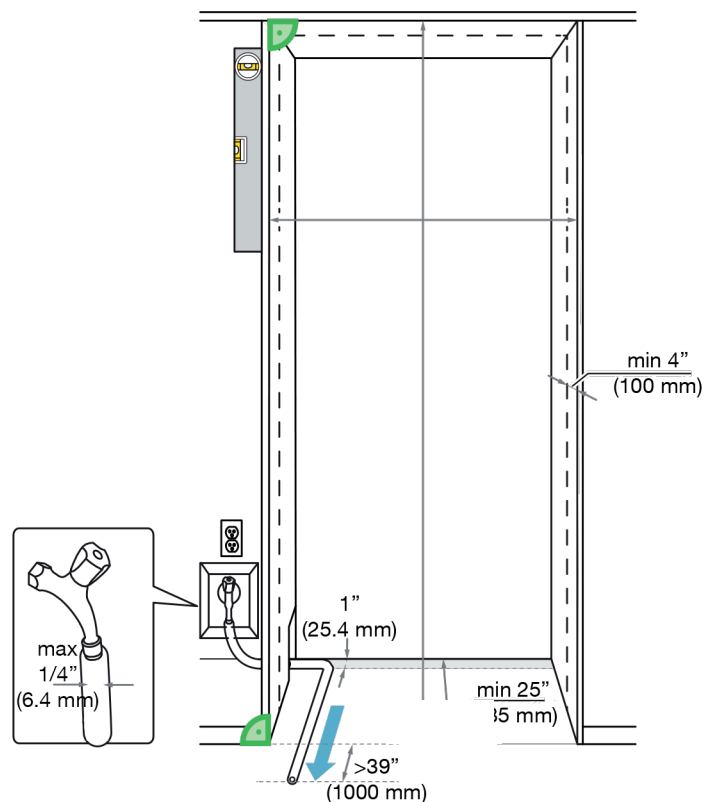
- The electrical connection must not be positioned higher than 9" (228.6 mm) above the floor.

**For All Freezers and Bottom Mount units only:**

- The 1/4" (6.4 mm) plumbed water connection should not be positioned higher than 2" (50.8 mm) above the floor.

**Notes:**

In case of an emergency the electrical outlet and water shutoff must be easily accessible and must not be concealed behind the appliance.

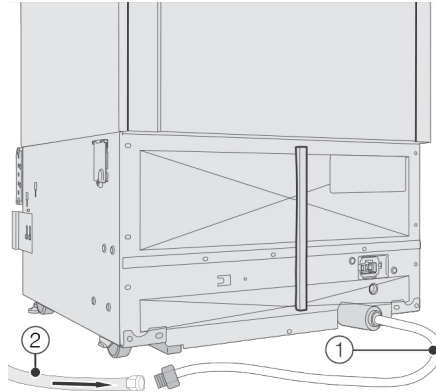


## Fully Integrated 36" MasterCool

### ELECTRICAL AND WATER CONNECTION

(Water Connection For F 29x1 Vi & KF 29x1 Vi Only)

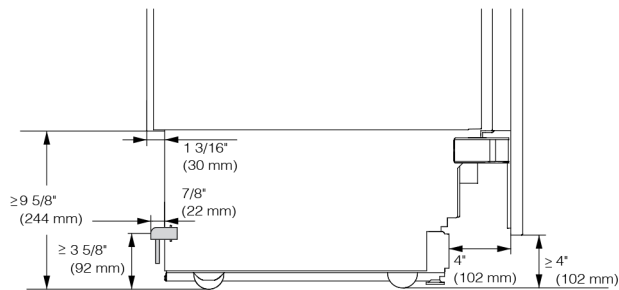
Rear View



#### Water Connection:

- 1/4" water line is required
- Located at the rear of the appliance on a 4' 11" line.
- 1/4" compression fitting, ready to accept 1/4" line.

Side View



#### Notes:

- In case of an emergency the electrical outlet and water shutoff must be easily accessible and must not be concealed behind the appliance.
- In the event that connection points are located behind the unit the electrical outlet and water connection should be located no higher than 9 5/8" from the floor.

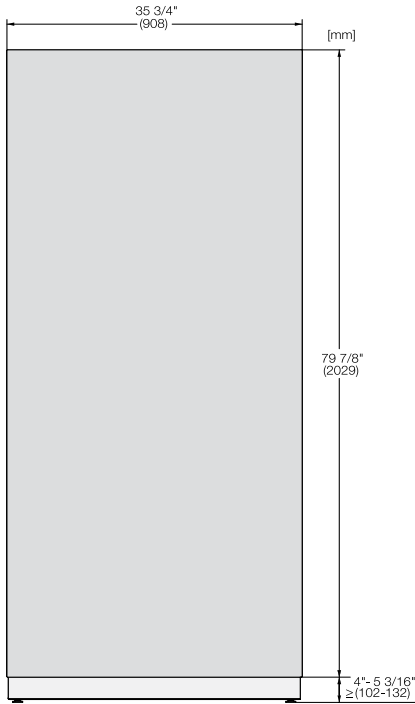


## Fully Integrated 36" MasterCool

### CUSTOM PANEL DETAILS

For Models:

- F 2901 Vi • F 2911 Vi
- K 2901 Vi • K 2911 Vi

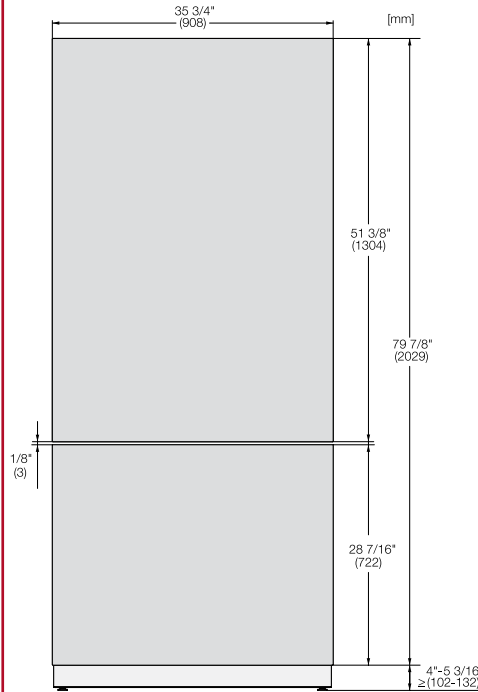


Max. Panel Weight:  
F 29x1 Vi - 68;bs  
K 29x1 Vi - 106 lbs

Optional Accessory:  
Clean Touch Steel Panel:  
• KFP 3605  
Material# 11499100

For Models:

- KF 2901 Vi • KF 2911 Vi

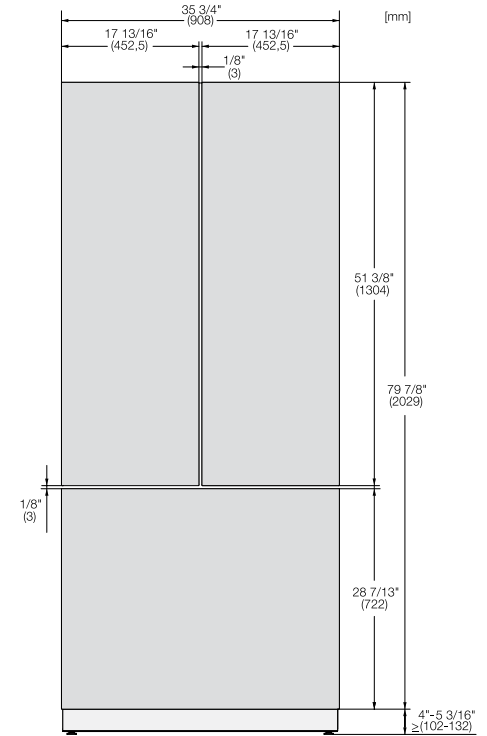


Max. Top Panel Weight: 86 lbs  
Max. Bottom Panel Weight: 19 lbs

Optional Accessory:  
Clean Touch Steel Panel:  
• KFP 3615 - Top Panel  
Material# 11499140  
• KFP 3625 - Bottom Panel  
Material# 11499150

For Models:

- KF 2981 Vi

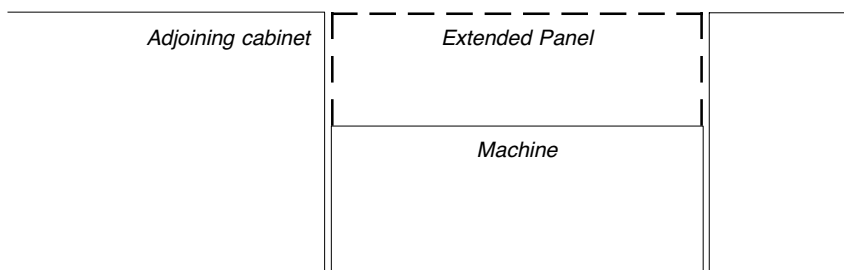


Max. Top Panel Weight (x2): 150 lbs  
Max. Bottom Panel Weight: 19 lbs

Optional Accessory:  
Clean Touch Steel Panel:  
• KFP 3635 - Top Panel  
Material# 11499420  
• KFP 3625 - Bottom Panel  
Material# 11499150

## Panel Notes

*If the adjoining cabinets are taller than the height of machine (HOM) - the front panel may be extended accordingly. Simply maintain the toekick height and extend the panel the needed distance.*

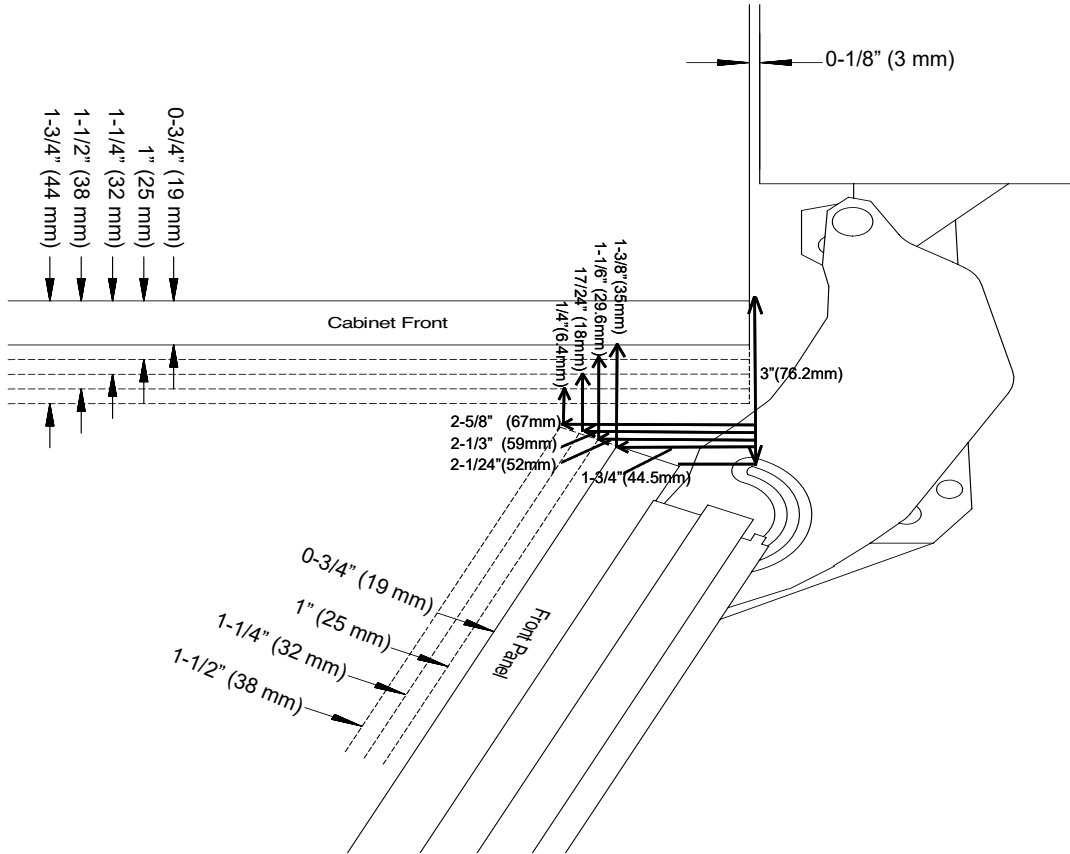


## Fully Integrated 36" MasterCool

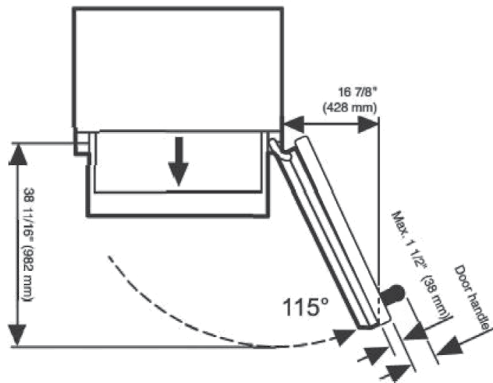
### HINGING DETAILS 115° OPENING

Available for the following models:

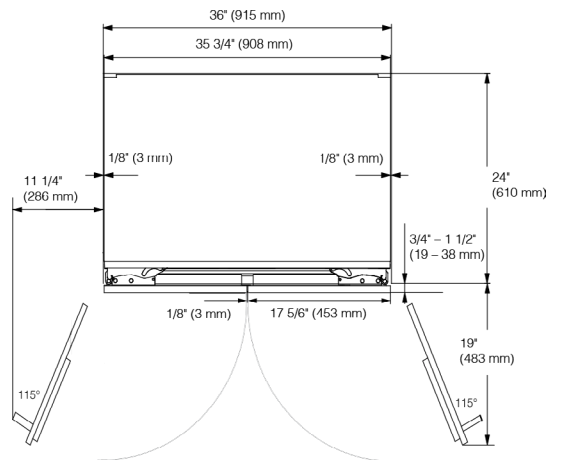
- K 29x1 Vi
- F 29x1 Vi
- KF 29x1 Vi



Top View  
(K29x1Vi, F29x1Vi, KF29x1Vi)



Top View  
(KF2981Vi)



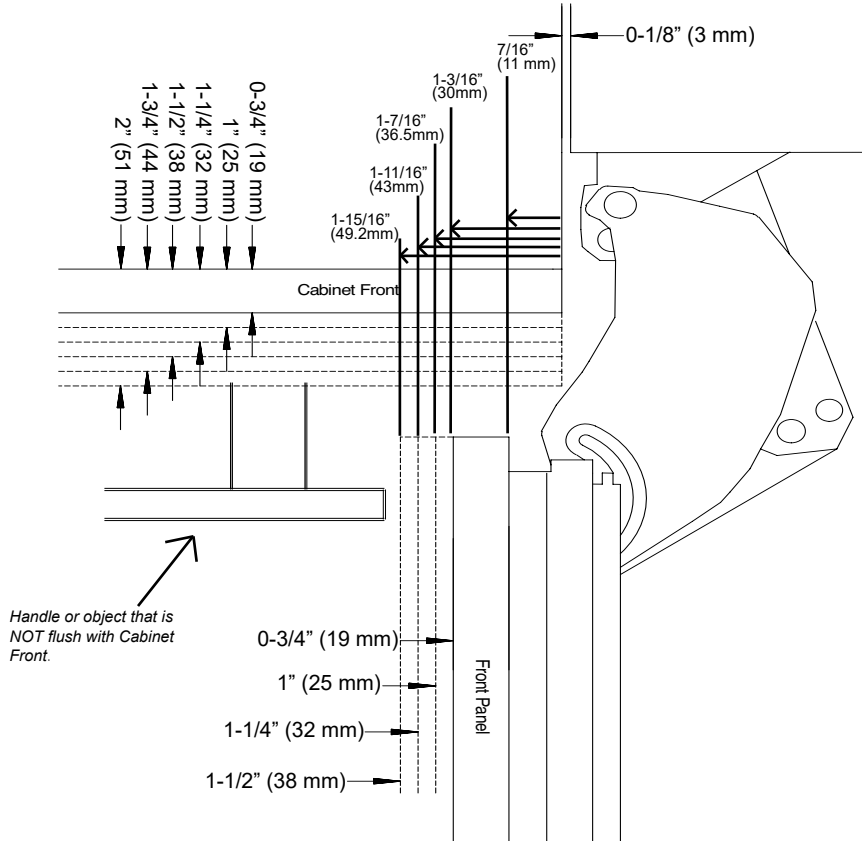
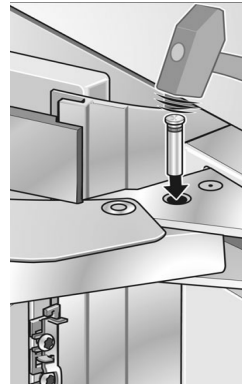


## Fully Integrated 36" MasterCool

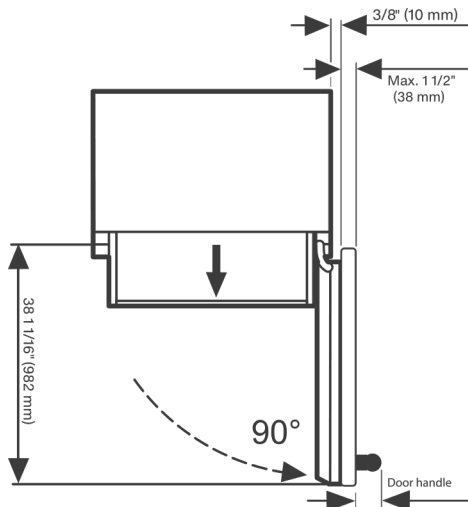
### HINGING DETAILS 90° OPENING

Available for the following models:

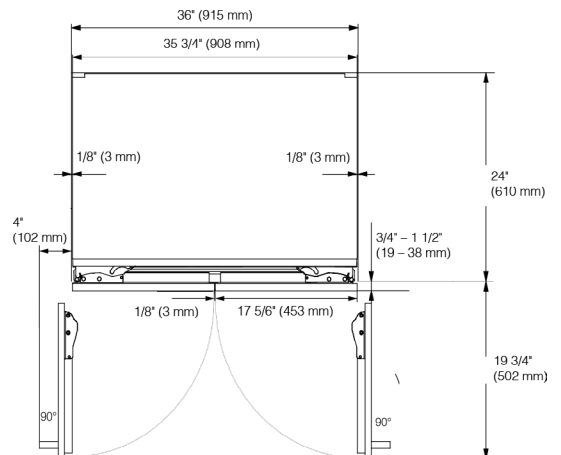
- K 29x1 Vi
- KF 29x1 Vi



Top View  
(K29x1Vi, KF29x1Vi)



Top View  
(KF2981Vi)



**Freezer units cannot be stop pinned at 90°**