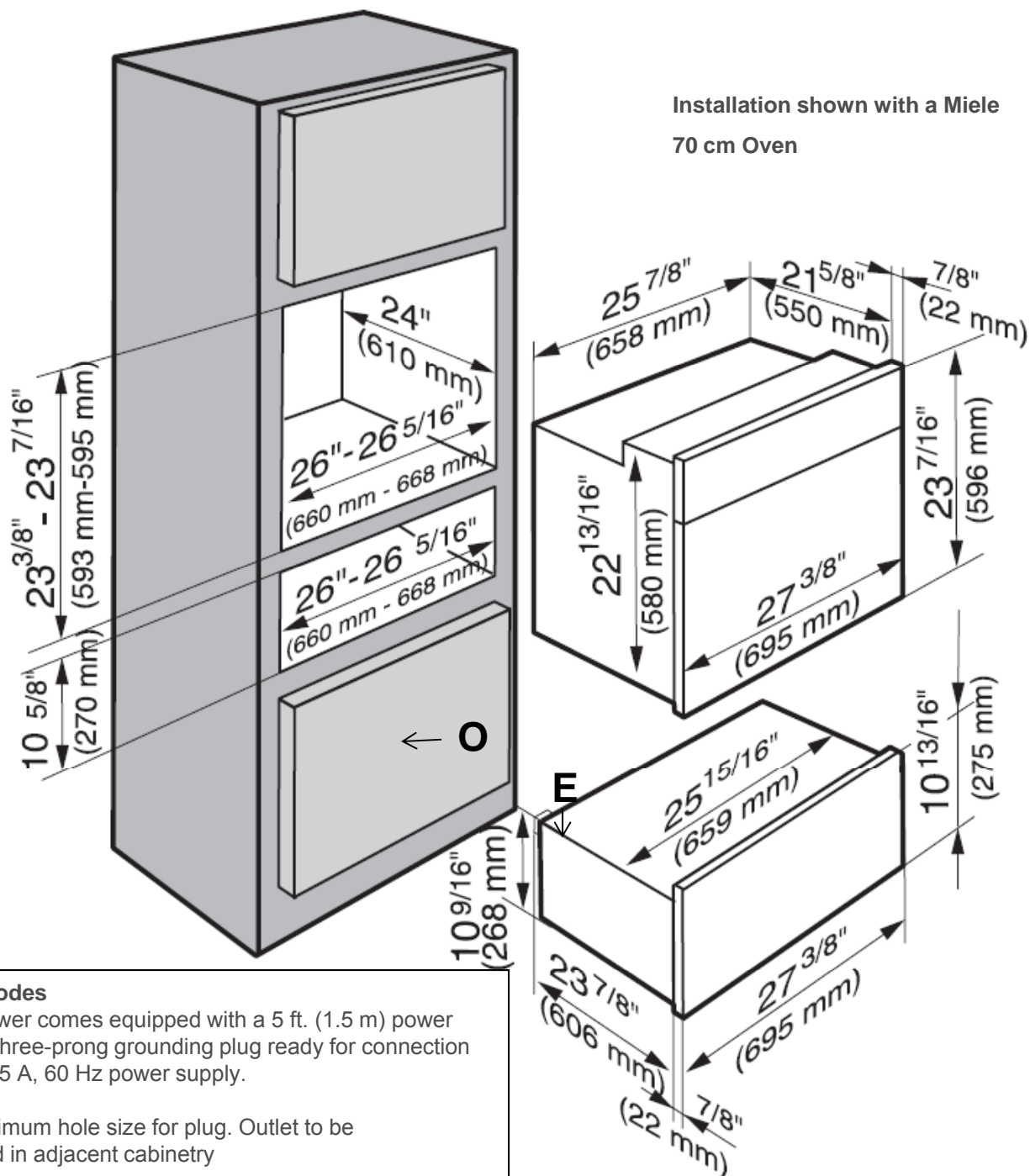


Product and Cut-out Dimensions Warming Drawer ESW 4702 FB Custom Panel and Handle

Page 1 of 3



Location Codes

E – The drawer comes equipped with a 5 ft. (1.5 m) power cord with a three-prong grounding plug ready for connection to a 120V, 15 A, 60 Hz power supply.

O – 1" ² minimum hole size for plug. Outlet to be installed in adjacent cabinetry

Notes

Panel must consist of heat resistant material 140 ° F (60° C). Miele appliances can be installed flush or proud. Discuss your installation requirements with your architect, designer and installer.

All installations must be done in accordance with local codes.

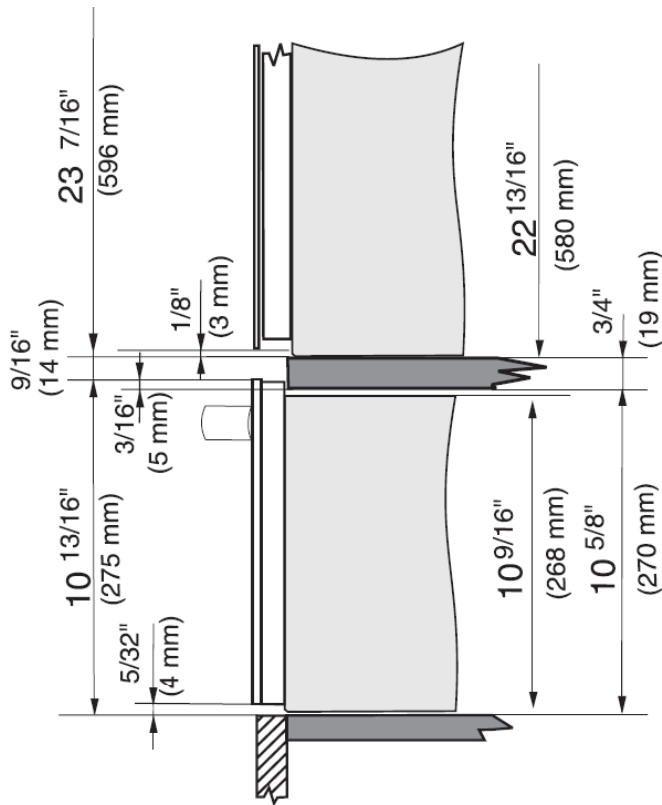
Note: Drawing is not to scale

Specification Sheets OJS 11142011

Product and Cut-out Dimensions
Warming Drawer
ESW 4702 FB Custom Panel and Handle

Page 1 of 4

Side view with a Miele oven



This unit is designed to accept a custom door panel supplied by the cabinet maker.

Panel size as follows:

Width: 27 3/8" (695 mm)

Height: 10 5/8" (270 mm)

Thickness: Minimum of 3/8" (10 mm)

Maximum panel weight: 11 Pounds (5 kg)

Location Codes

E – The drawer comes equipped with a 5 ft. (1.5 m) power cord with a three-prong grounding plug ready for connection to a 120V, 15 A, 60 Hz power supply.

O – 1" ² minimum hole size for plug. Outlet to be installed in adjacent cabinetry

Notes

Panel must consist of heat resistant material 140 ° F (60° C). Miele appliances can be installed flush or proud. Discuss your installation requirements with your architect, designer and installer.

All installations must be done in accordance with local codes.

Note: Drawing is not to scale

Specification Sheets OJS 11142011

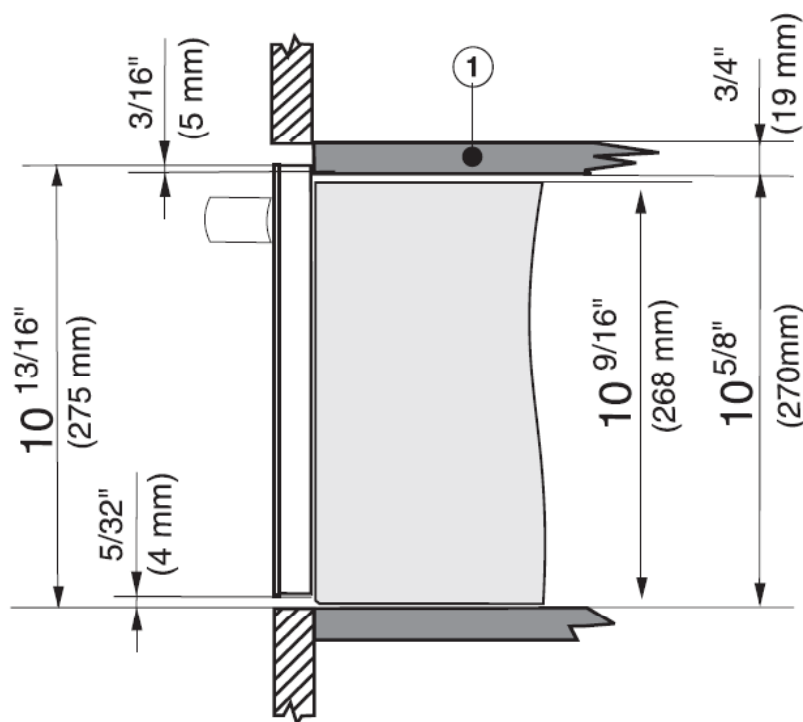
Product and Cut-out Dimensions

Page 1 of 4

Warming Drawer ESW 4702 FB Custom Panel and Handle

Side view

- ① A base is required for solo installations



This unit is designed to accept a custom door panel supplied by the cabinet maker.
Panel size as follows:

Width: 29 13/16" (695 mm)

Height: 10 5/8" (270 mm)

Thickness: Minimum of 3/8" (10 mm)

Maximum panel weight: 11 Pounds (5 kg)

Location Codes

E – The drawer comes equipped with a 5 ft. (1.5 m) power cord with a three-prong grounding plug ready for connection to a 120V, 15 A, 60 Hz power supply.

O – 1" ² minimum hole size for plug. Outlet to be installed in adjacent cabinetry

Notes

Panel must consist of heat resistant material 140 ° F (60° C).
Miele appliances can be installed flush or proud. Discuss your installation requirements with your architect, designer and installer.

All installations must be done in accordance with local codes.

Note: Drawing is not to scale

Specification Sheets OJS 11142011